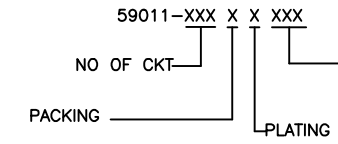


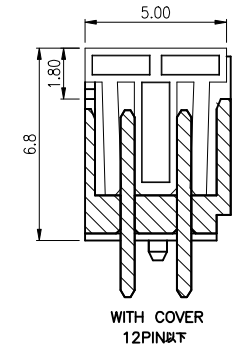
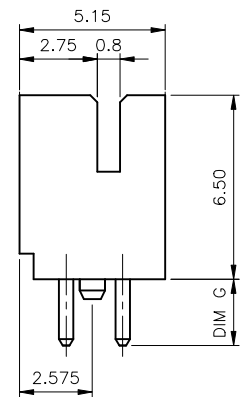
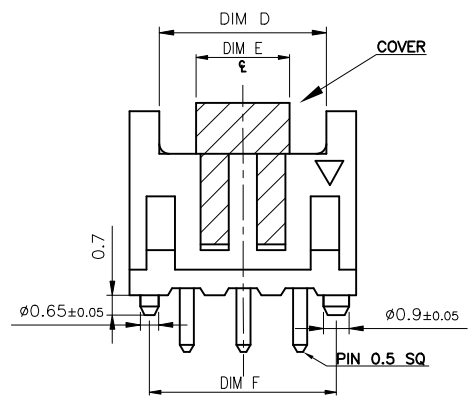
(4 PIN)

- NOTES:
 1. MATERIAL:
 1.1 HOUSING: THERMOPLASTIC, HIGH TEMP., UL94V-0; COLOR:BLACK OR NATURAL.
 1.2 CONTACT: COPPER ALLOY
 2. FINISH:
 2.1 CONTACT:
 N:50u"min NICKEL OVERALL, 120u" MIN. PURE TIN(MATT TIN) .
 3. WAVE SOLDER CAPABLE TO 260°C PER ACES SPEC.
 4. SPEC. PLS. REFER TO PS-59011-XXXX-XXX
 5. PACKAGE PLS. REFER TO PART NUMBER
 6. PART NUMBER

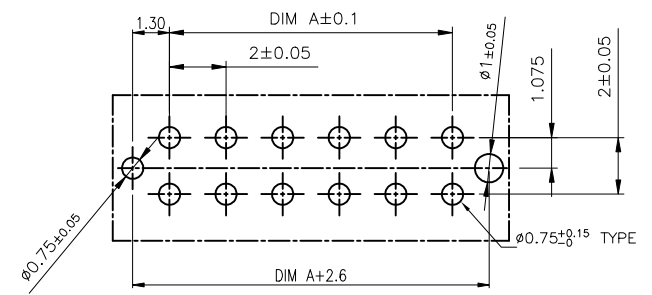


XXX	DIMØ	WITH BOSS	PACKING	HOUSING COLOR
001	1.5	NO	59011-XXXX-TRP	BLACK
002	2.0	NO		BLACK
003	3.0	NO	59011-XXXX-003-TRP	BLACK
004	2.4	NO	59011-XXXX-003-TRP	BLACK
005	1.5	YES	59011-XXXXXB-TRP	BLACK
006	1.5	YES	59011-XXXXB-01-TRP	BLACK
007	3.0	NO	59011-TB	BLACK
008	3.0	NO	59011-XXXX-003-TRP	NATURAL
W01	1.5	NO	59011-XXXXXX-XX-TRP	BLACK

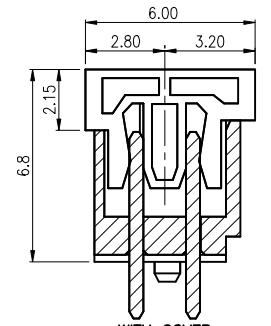
0:TAPE & REEL
 1:Tube(W/O Cap & Mylar)
 7:TAPE & REEL WITH COVER
 N: MATT TIN(LEAD FREE)



WITH COVER 12PINW/T



RECOMMENDED PCB LAYOUT
 GENERAL TOLERANCE ±0.05



WITH COVER 12PINL(±12PIN)

CKTS	DIMENSION MM					
	A	B	C	D	E	F
4	2.00	6.00	4.80	3.40	3.30	4.60
6	4.00	8.00	6.80	5.90		6.60
8	6.00	10.00	8.80	7.90		8.60
10	8.00	12.00	10.80	9.90	5.00	10.60
12	10.00	14.00	12.80	11.90		12.60
18	16.00	20.00	18.80	17.90		18.60
20	18.00	22.00	20.80	19.90		20.60
22	20.00	24.00	22.80	21.90		22.60
26	24.00	28.00	26.80	25.90		26.60

QUALITY SYMBOLS MAJOR Ⓢ CRITICAL Ⓢ	DRAWN BY GAOLI	DATE 23/11/15	
GENERAL TOLERANCES (UNLESS SPECIFIED)	CHECKED BY XUZHUYONG	DATE 23/11/15	
X. ±0.5 .X ±0.25 .XX ±0.15 .XXX ±0.1 ANGLES ±2°	APPROVED BY XUZHUYONG	DATE 23/11/15	TITLE 2.0 MM WTB Wafer Conn. T/H D/R S/T TYPE
	UNITS mm	SIZE A4	RFQ NO. N/A
	SCALE 2 : 1	SHEET NO. 1 OF 1	REV R
			DWG NO. 59011-XXXX-XXX